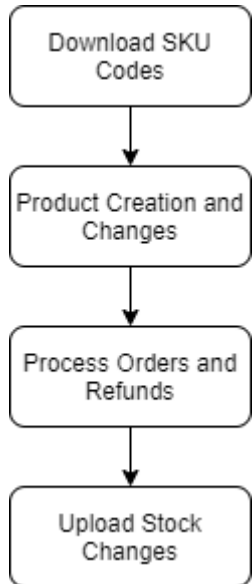


Shopify Sync

Shopify Sync by Fashion EPOS Solutions Ltd. Private and Confidential.

Basic Cycle of Shopify Sync



Download SKU Codes

This updates the SKU/PLU mapping in Fashione.

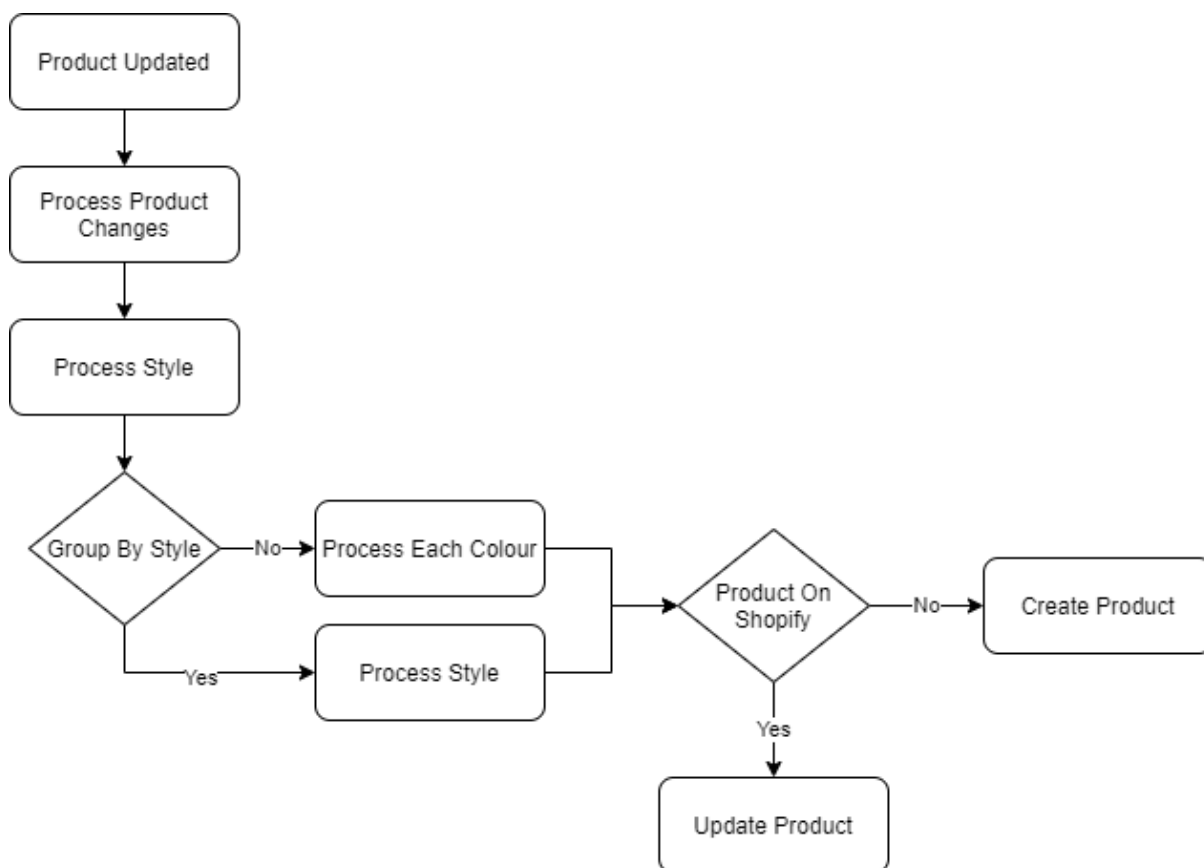
Cycle

The cycle usually runs every 5 minutes, however if the sync has a que this could take considerably longer.

Set Up

Shopify Sync connects by a Private App that is set up.

Product Creation and Product Changes



Product Creation Settings:

- **Group by Style:**
 - If set to yes, the product will be grouped by style meaning all colour variants will be under one product.
 - If set to no, the product will create separate products per colour.

Product Update Settings:

If the vendor changes on Fashione this will update.

- **Update retail price:**
 - if enabled retail prices from Fashione, will be updated on Shopify.
- **Update second price:**
 - if enabled second prices from Fashione, will the Shopify retail price and the compare at price will be set to the Fashione retail price.

Fashione to Shopify

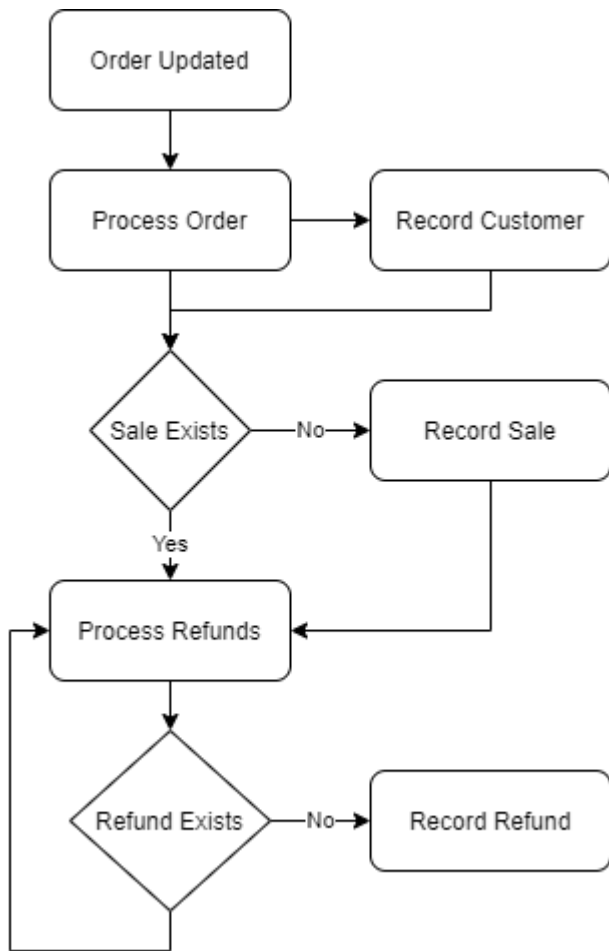
Title: Optional (Brand, Style, Colour, Description)

Vendor: Brand

Product Type: Category

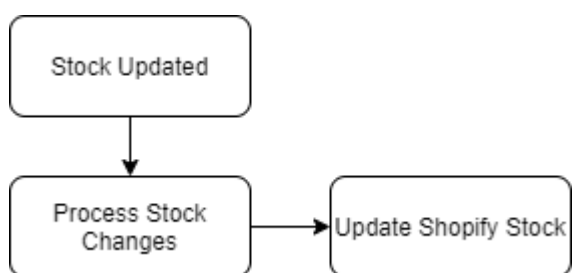
Tags: Brand, Category, Department, Sub Department and Season.

Processing Orders and Refunds



Stock levels are updated when the sales and refunds are recorded.

Update Stock Changes



Stock Settings:

Stock locations on Fashione have a website flag. If this option is set to no the stock levels will not be uploaded.